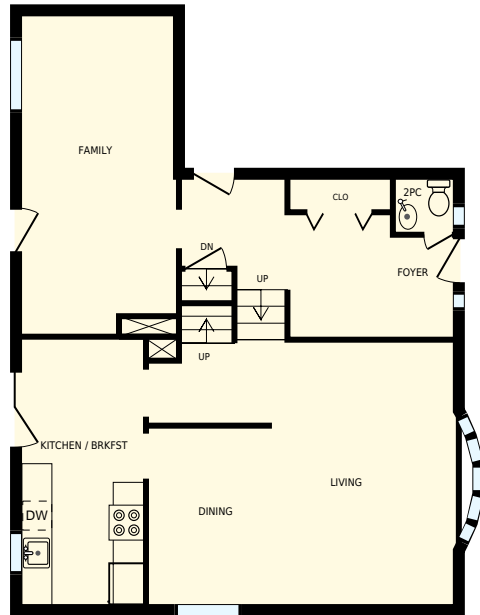


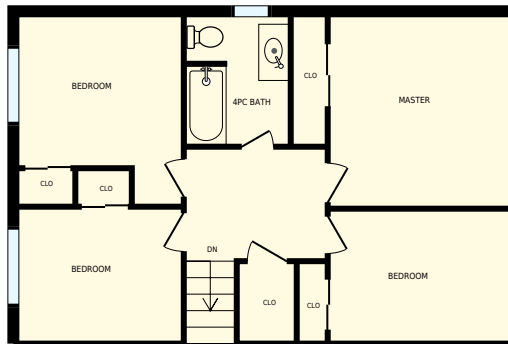


# 17 Albery Crescent, Ajax, ON

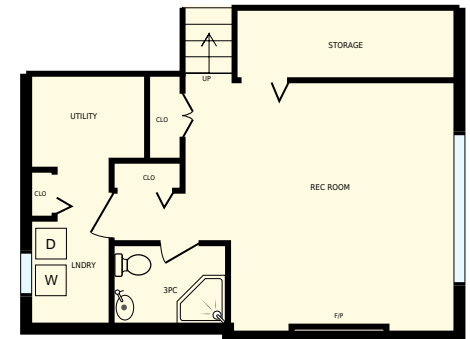
Total Exterior Area Above Grade 1815 sq. ft



**Main floor**  
Exterior Area 1030 sq. ft



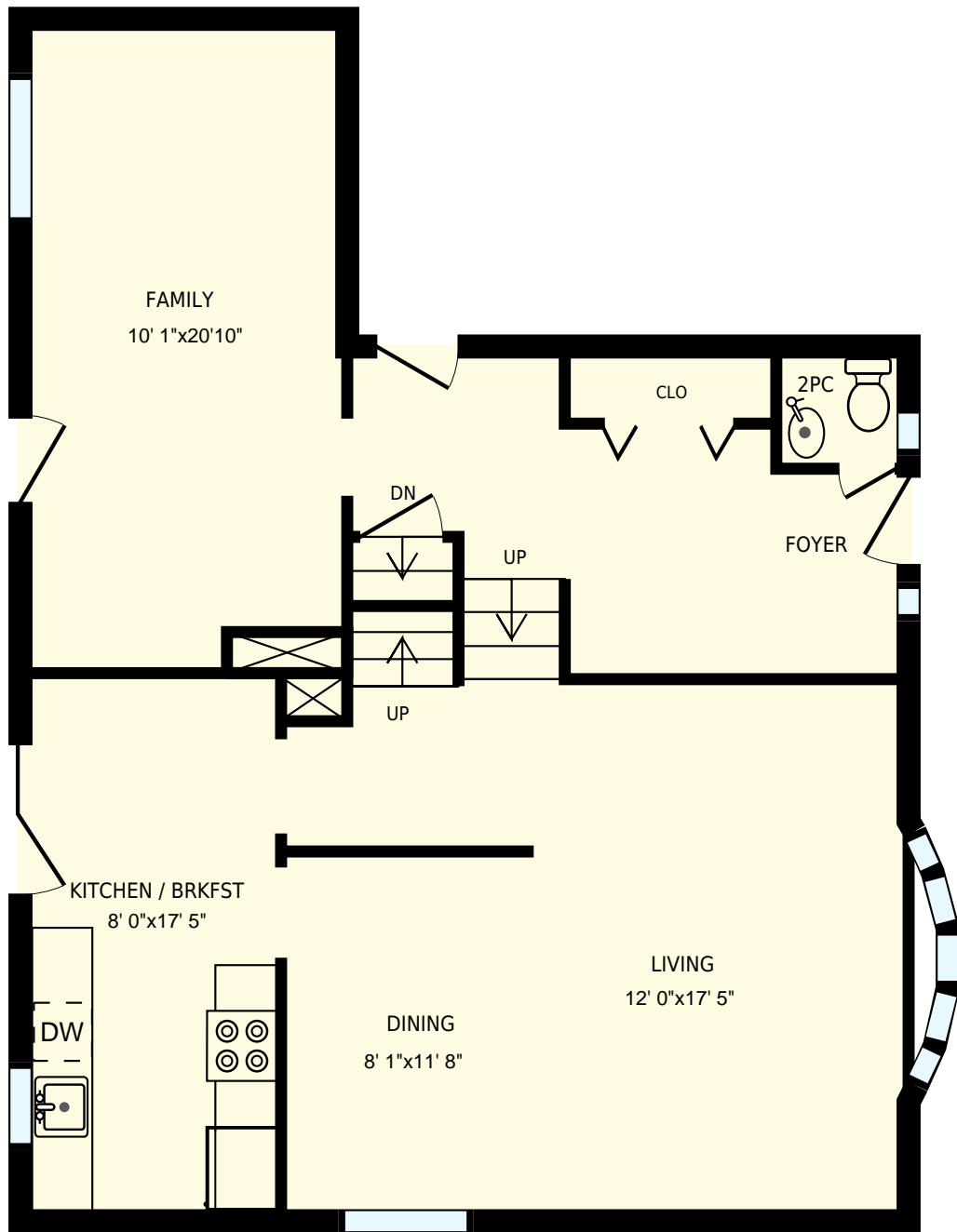
**2nd floor**  
Exterior Area 785 sq. ft



**Basement**

All rooms dimensions and floor areas must be considered approximate and are subject to independent verification. For method of measurement please see <http://youriguide.com/measure/>.

PREPARED FOR:

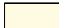


17 Albery Crescent, Ajax, ON

PREPARED FOR:

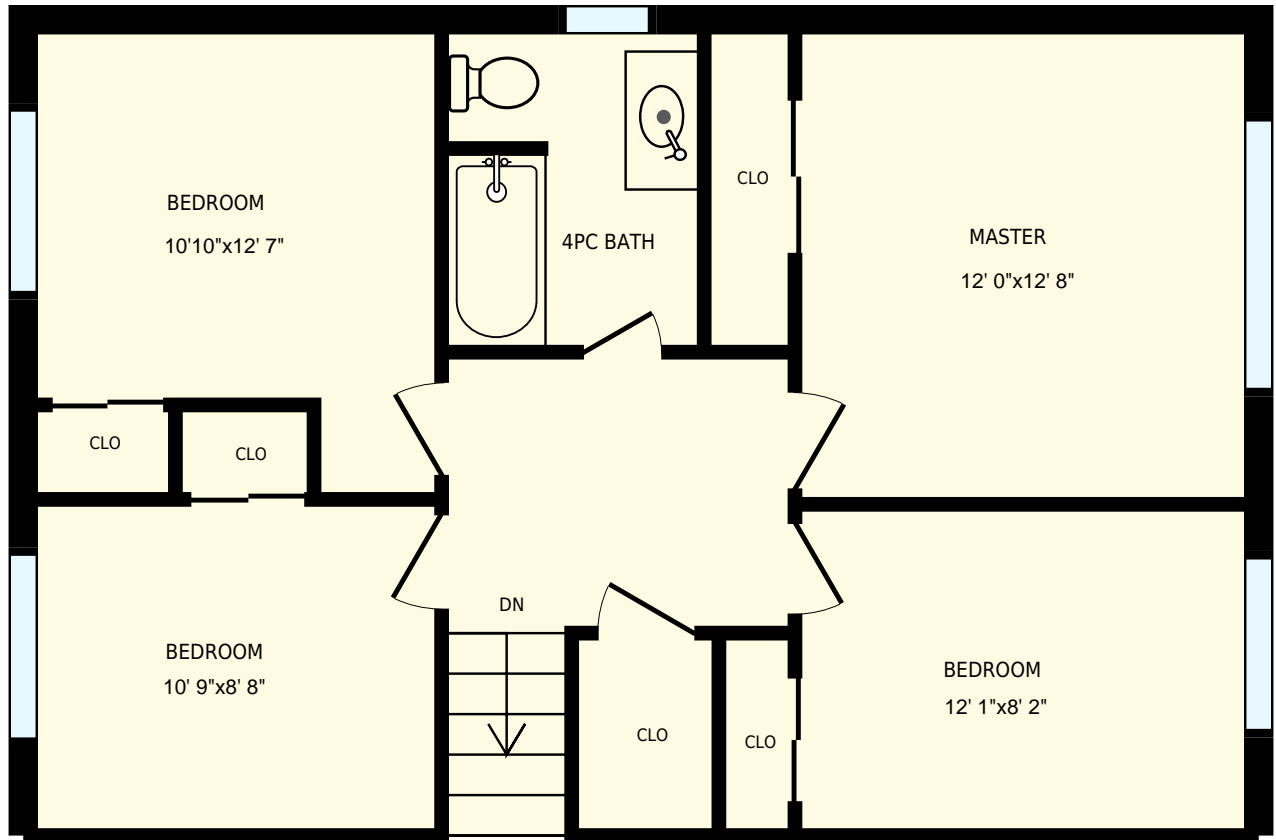
Main floor

Interior Area 932 sq. ft  
 Exterior Area 1030 sq. ft

 Included Area

PREPARED ON:  
 Jul, 2016

All rooms dimensions and floor areas must be considered approximate and are subject to independent verification. For method of measurement please see <http://youriguide.com/measure/>.




17 Albery Crescent, Ajax, ON

PREPARED FOR:

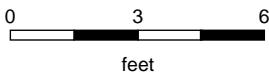
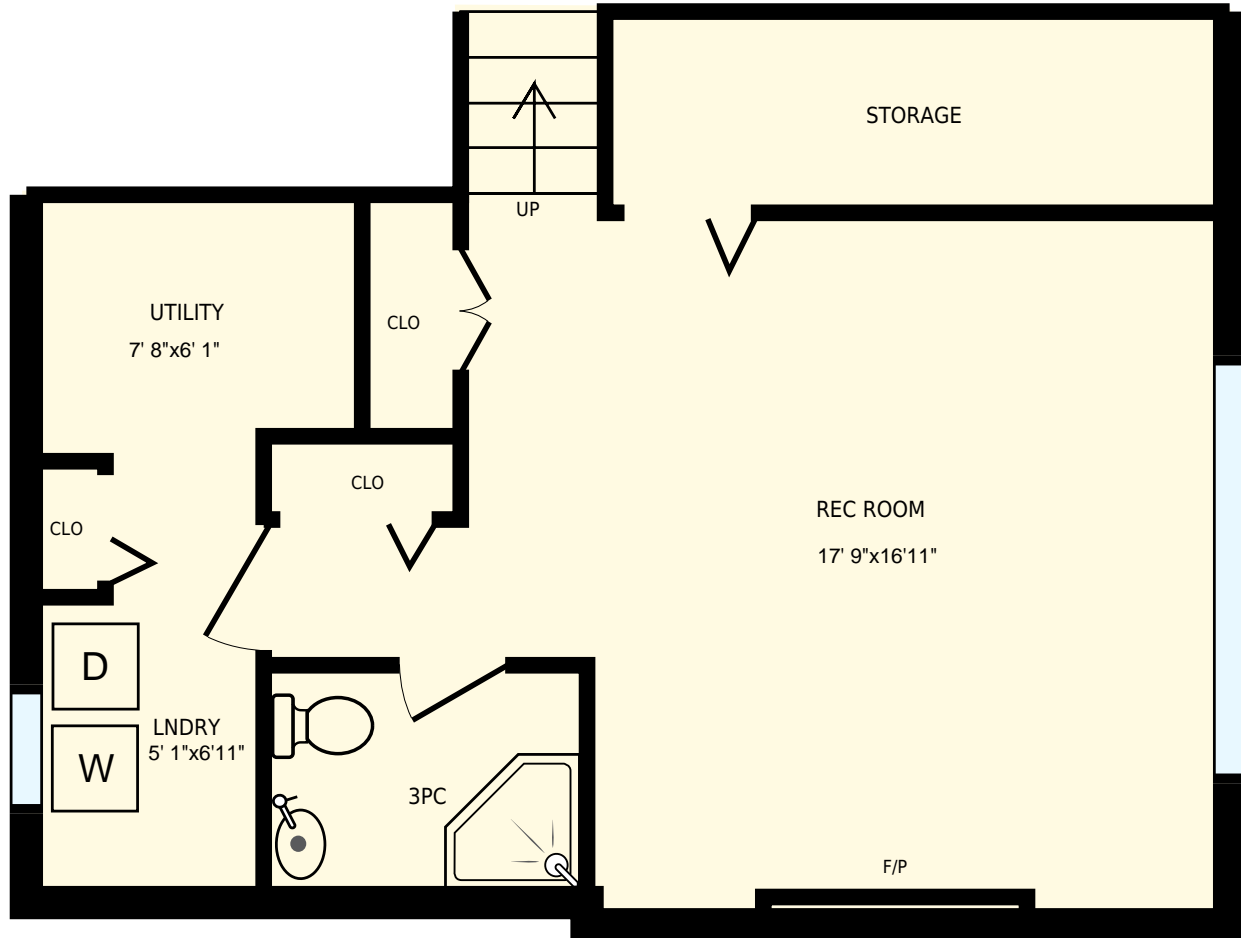
2nd floor

Interior Area 706 sq. ft  
Exterior Area 785 sq. ft

 Included Area

PREPARED ON:  
Jul, 2016

All rooms dimensions and floor areas must be considered approximate and are subject to independent verification. For method of measurement please see <http://youriguide.com/measure/>.




17 Albery Crescent, Ajax, ON

PREPARED FOR:

Basement

Interior Area 549 sq. ft  
Exterior Area

 Included Area

PREPARED ON:  
Jul, 2016

All rooms dimensions and floor areas must be considered approximate and are subject to independent verification. For method of measurement please see <http://youriguide.com/measure/>.