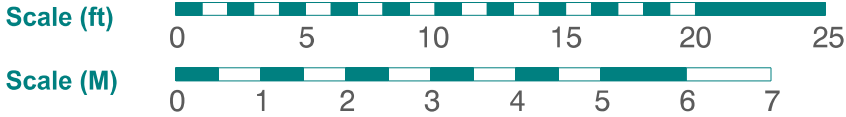
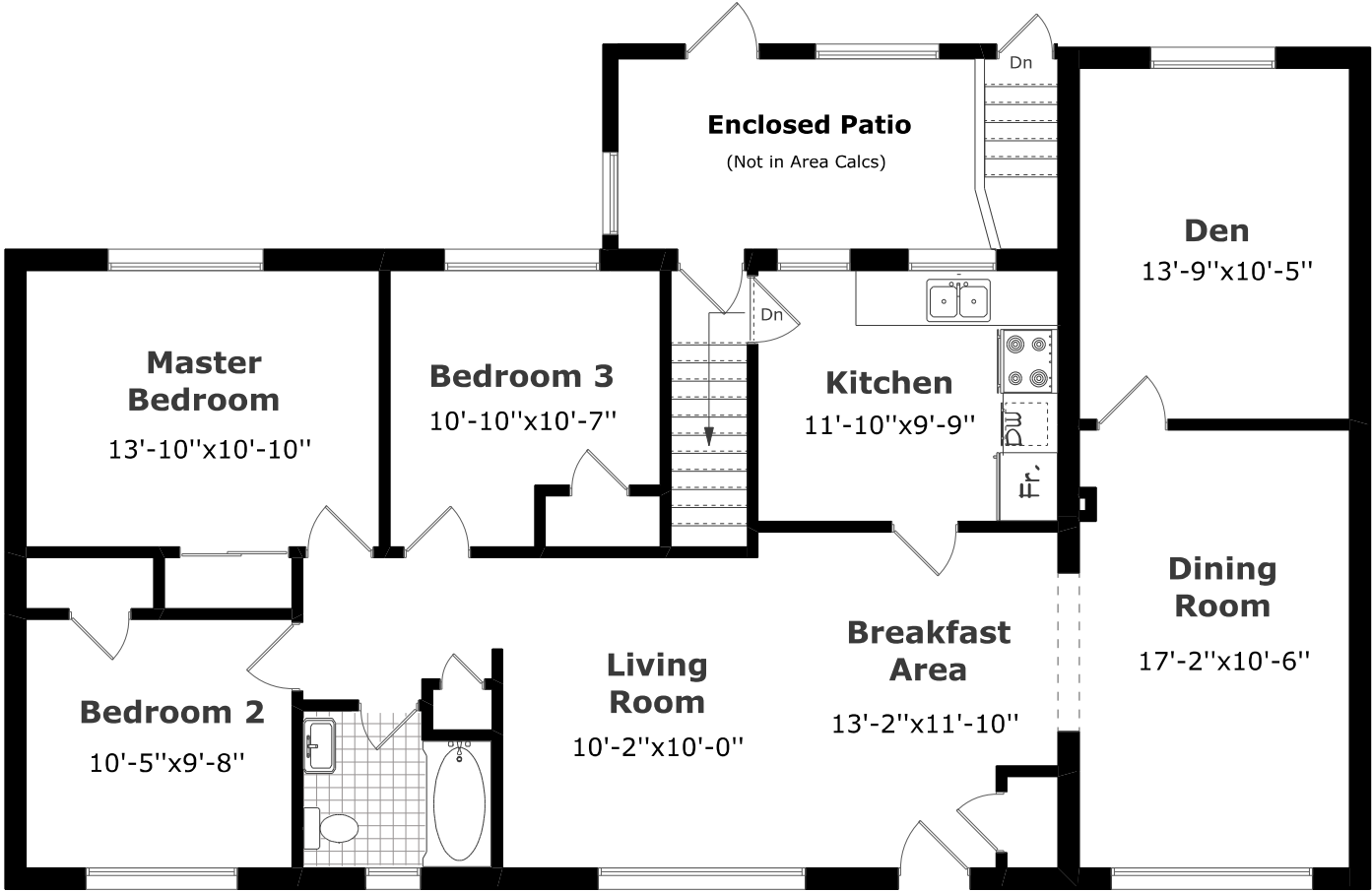


# 373 Wadsworth Street



April 2016



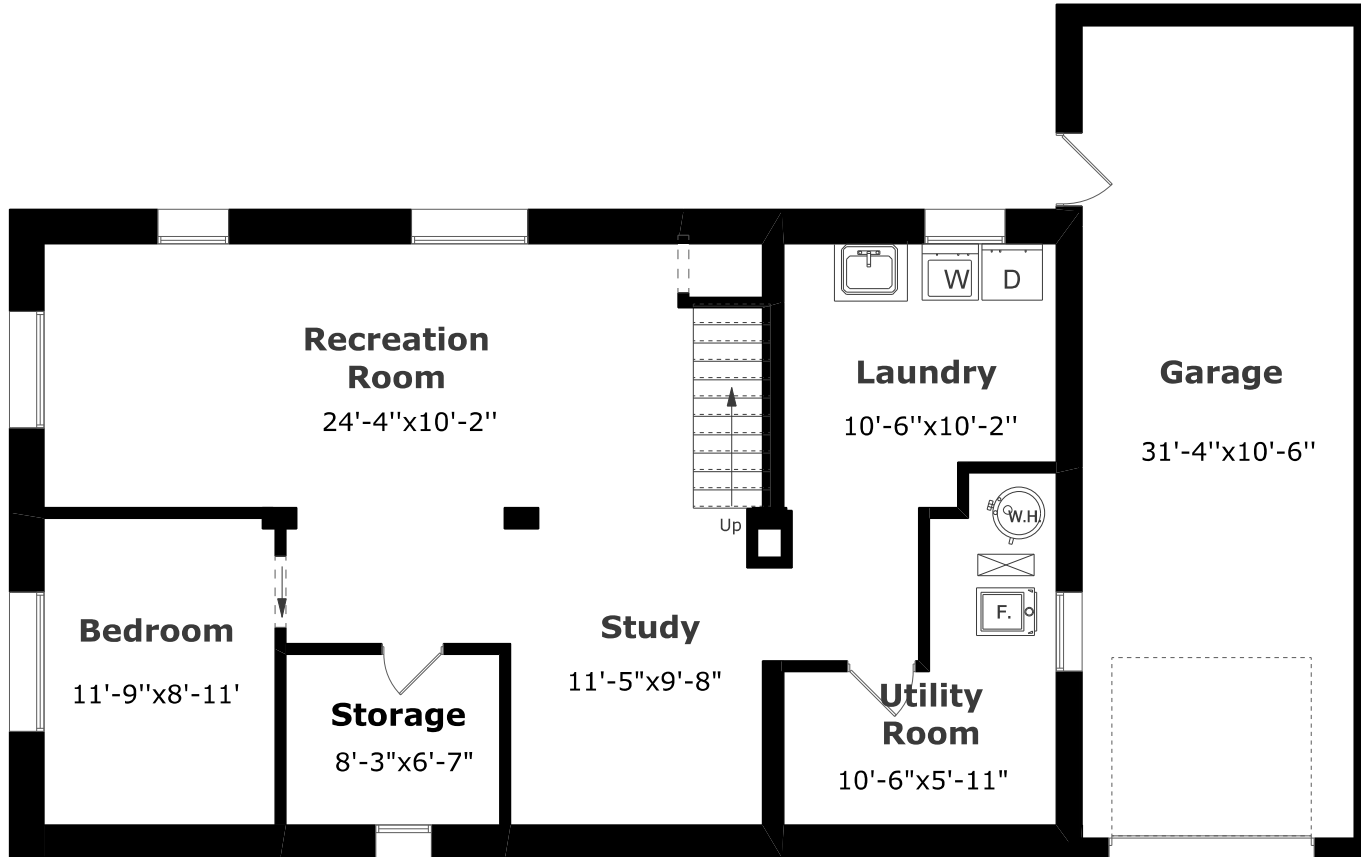
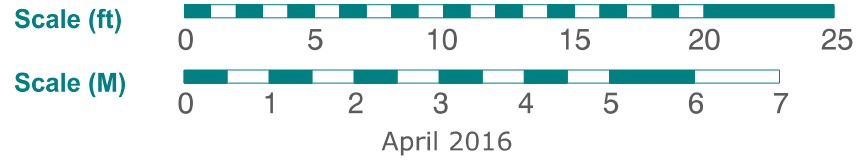
## Main Floor Plan

1,440.5 sq. ft. +  
143.4 sq. ft. (Enclosed Patio)



Measurements may not be 100% accurate. Floor Plans provided for illustrative purposes only. Room sizes not used to calculate area.

# 373 Wadsworth Street



## Basement Plan

1,012.7 sq. ft.+  
407.0 sq. ft. (Garage)



Measurements may not be 100% accurate. Floor Plans provided for illustrative purposes only. Room sizes not used to calculate area.